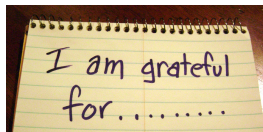


Restorative Justice Practices!



Save the Dates!

- **Interim Assessments in ELA and Math:** 11/20-11/17
- **Board Meeting:** Mon 11/16 at 6pm
- **Half Day Dismissal:** Fri. 11/20 for Professional Development
- **End of Trimester 1:** Tues. 11/24
- **Half Day Dismissal:** Wed. 11/25 for Professional Development
- **School Closed Thanksgiving Break:** Thurs. 11/26 & Fri. 11.27



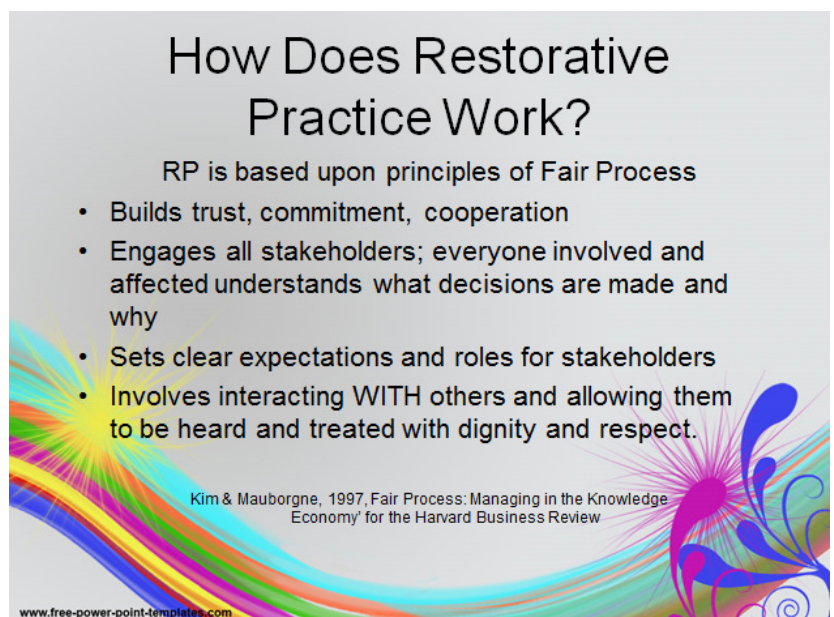
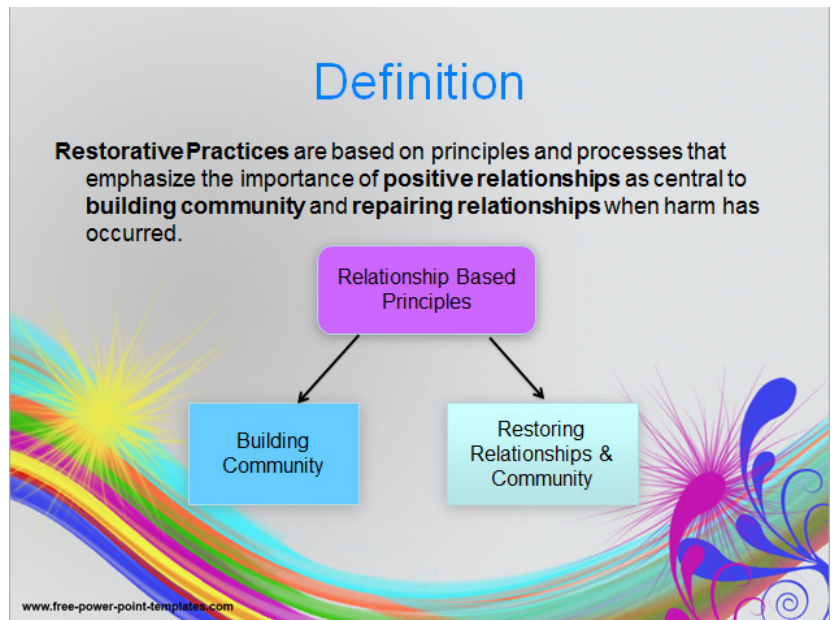
GRATITUDE DAY!

For the second year, Pride Academy will be partnering up with Ellen's House, which is a non-profit organization that was started by one of our Pride Parents, Ms. Bearfield, mother of 6th grader Kayla Cross. Each team will work together to put together a box of non-perishable items to donate for low-income senior citizens. These items, along with turkeys that we will provide through fundraising, will be distributed to local seniors at the Bowser Family Senior Center on **Saturday, November 11th**. Thank you to all of our Pride families for working together to contribute towards this important cause.

Restorative Practices have been at the core of our discipline policy and code of conduct here at Pride Academy from the day we opened our doors in 2008! Our emphasis on the practice of core values, solving problems and conflict through peaceful means including de-escalation, talking it out, mediation, peace circles and showing unconditional regard and respect for each other are a few examples.

Over the course of the last two years, we have been even more deliberate about examining and implementing practices grounded in the theory of Restorative Justice. In the next few newsletters, we will spotlight some of the ways in which your children have been and will be involved in restorative justice practices as we continue to teach non-violent, physically and emotionally safe and empowering ways to resolve conflict, understand and respect differences, and become more confident in taking *upstander* stances in the face of bullying or injustice of any kind.

Please reach out to Ms Brower or Mrs. Thomas for more information and resources!



Assessment News by Mr. Ofstad

During the weeks of 11/9 through 11/18, your child will be taking very important Interim Assessments in ELA and Math! Over this period of time, students will only be testing for two days and they will be testing at different times during their schedules. In order to create the best testing conditions as possible for everyone during each day of testing, we will reinforce quiet and courteous hallway transitions and classrooms. Historically, Pride Academy has done very well both on the Interim Assessments as well as the annual State Tests. We are very proud that our school has been recognized by the New Jersey Department of Education as a "Tier 1" school for the past three State Tests on record, and we are eagerly awaiting the 2015 PARCC assessment results, which are scheduled to be released during the month of December.

In addition to the ranking of schools, the NJDOE also reports on how our scores compare to other schools in the East Orange district, as illustrated in the graphs below:



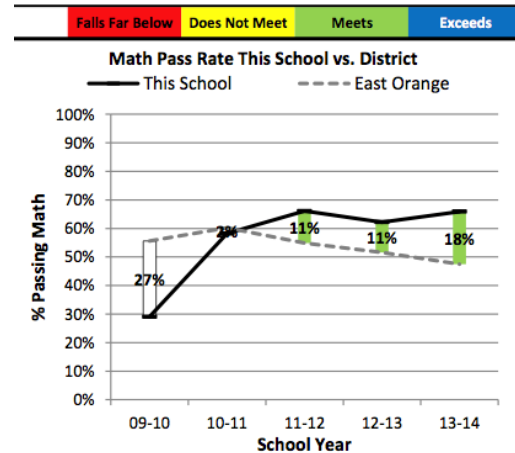
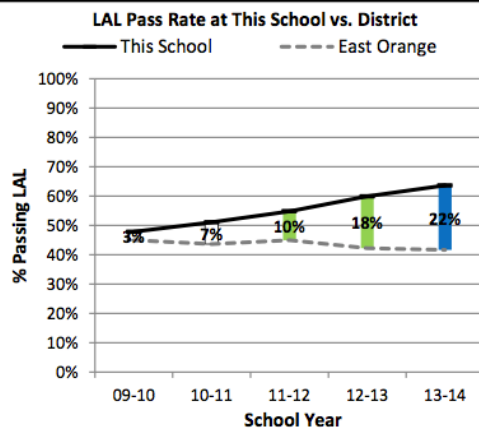
K-8 Performance Framework Report 2013-14
Pride Academy Charter School

This School's Tier Rank

2011-12 Tier Rank:	1
2012-13 Tier Rank:	1
2013-14 Tier Rank:	1

Reason for 2013-14 Tier Rank: Met 3 of 3 Targets

Comparative Performance



The graphs show that while our scores in ELA and Math have increased every year at Pride, there has been a decrease in the scores for the rest of the East Orange School district. Central to our growth and improvement in academic achievement, is our consistent effort to evaluate student learning and track student growth. The scores students receive on their Interim Assessments play a very important role in this process. During these assessments, students are tested on what they have learned over the past six weeks of teaching as well as their most recent weeks of learning. Their teachers analyze the assessment results, plan interventions and enrichment activities based on the trends, and revise their curriculum maps to solidify how to most effectively support your children as they prepare for PARCC in April and promotion to their next grade. It is very important that each of our student's scores reflects the best of his/her ability at the point in time that the assessment is given. We need you to partner with us in the following ways in order to support your children in doing their very best on the Interim Assessments:

- Ensure that your child has a good night's sleep prior to testing;
- Encourage your child to eat a wholesome breakfast to fuel their brains on testing days;
- Ensure that your child arrives to school early on testing days to avoid worrying about being late and missing time;
- Talk to your Pride Scholar about preparing for the assessment and doing their best; you are their greatest and most influential cheerleader!

As always, we appreciate and acknowledge all the effort and amazing results our Pride Scholars accomplish. We also know that the results and growth would not be possible without the support and love of parents, guardians, siblings, aunts and uncles, grandparents, coaches, mentors, spiritual leaders, and other key figures in our Pride Scholars' lives. Please know that the support and affection you give helps us build powerful futures for our school and for your children!